

RECYCLING EQUIPMENT RANGE

Mobile Grinders, Slow Speed Shredders, Picking Stations, Air Separation Units, Trommels, Incline and Star Screen

KIVERCO™
RECYCLING PLANT



MORBARK

neuenhauser
Umwelttechnik



PRONAR

POWERSCREEN®
A TEREX BRAND



ABOUT LINCOM

Today Lincom Group is a parent company for a specialised range of businesses, supplying the quarry, mining and forestry industries with the sales, service and hire of screening, crushing and recycling equipment.

Lincom Group has operations throughout Australia, New Zealand, Papua New Guinea and the Pacific Islands. Lincom Group has offices in New South Wales, Victoria, Western Australia, North Queensland, Auckland and Christchurch and has representatives operating in Tasmania, South Australia and Northern Territory.

Lincom Group's head office is based in Southern Queensland, where is available a fully equipped manufacturing facility for custom fit outs, safety guards, machine rebuilds and repairs. The National Spare Parts distribution centre and the operational field service fleet for after-sales support are also based on the same site.

Lincom Group remains a wholly Australian owned and operated family business, backed by a team of dedicated industry professionals. The family business is currently being managed in the second generation by Stephen Watterson which has been vigorously involved in the organisation since 1998 and Roy Watterson now serves as a chairman on the Board of Directors. The close connection with the customers built on strong values of delivering world-class products makes Lincom Group a trusted and valued partner.

Why choose Lincom Group for your Recycling Equipment

At Lincom Group we take pride in building and maintaining strong relationships with valued customers, as well as with world-leading manufacturers like Powerscreen, Kiverco, Morbark and Pronar. Our close connections to the OEM's mean you benefit from latest and most technologically advanced machines on the market and the expert knowledge of the minds behind them.

We offer a helpful and professional service to support our customers in their journey for improved production and performance.

Customer Focus

Regardless of whether a customer wants a single machine or the design and installation of a complete processing plant, Lincom Group is dedicated to the highest levels of customer service.

We Invest Our Time

Lincom Group takes the time to understand the scope of the customer's operation and the task at hand.

Our sales staff receive continual product support training from the OEM factories on a regular basis to ensure they understand the products and the application to answer any questions, ensuring the customers get the most efficient equipment for the right application.

Lincom Group prides itself in having the sales staff fully trained in operational capabilities, in fact, in many cases our staff have worked on the equipment. We value the knowledge gained by having hands-on experience either from the build process or repair maintenance. When you are talking to the sales staff, you can be assured that they know their product, its capabilities and what is the best choice to improve your bottom line.

Local Service

Lincom Group understands the importance that the equipment plays in your business. Minimising the downtime and improving productivity is our sole mission. By working with a combination of a planned maintenance schedule and emergency repair teams, we are ready with experienced staff that provides the best service.



Local Parts

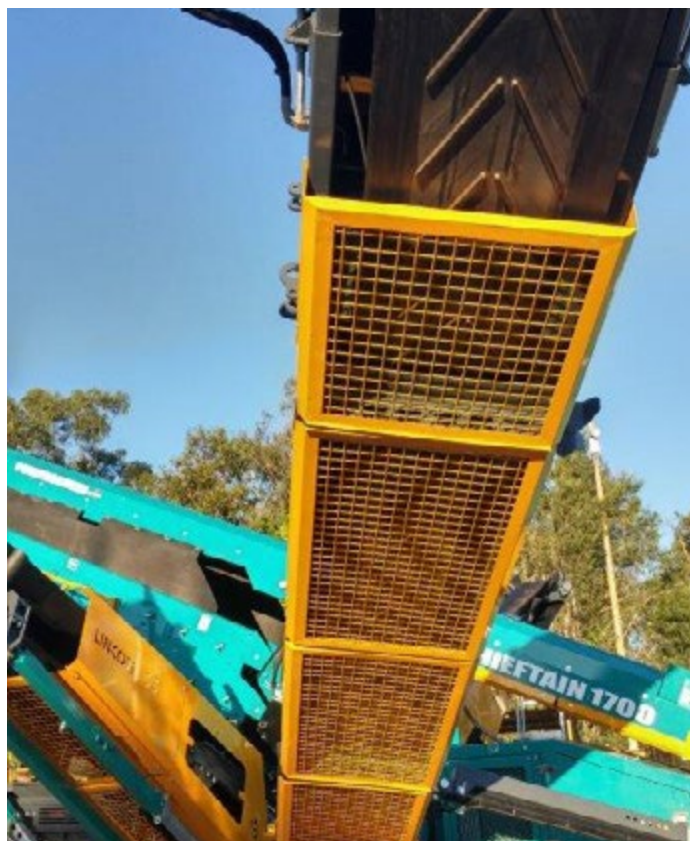
We treat every parts order as urgent and understand the potential costs associated with having your equipment unusable. Our National Parts Distribution Centre located in Brisbane, stocks an extensive range of parts (approximately 4500 lines) to support the Lincom Group nationwide chain of branches.

We maintain an online parts inventory database for all our locations and can access real-time information and locate parts in every branch in the country. Our commitment and long-time association with transport and logistics companies give us flexibility and the ability to deliver parts to you on time.



Safety is our Priority

At Lincom Group safety comes first, our crushing and screening and Morbark equipment are fitted with custom safety guards, lanyards to stop rope pulls and fire extinguishers which meet or exceed all Australian Standards. Our highly trained service engineers will provide training on the safety features and the safe operational requirements.



LINCOM BRANCHES

Operations throughout:

Australia, New Zealand, Papua New Guinea and the Pacific Islands.

*Our motto is “**Anywhere Anytime**” no matter the location, time or situation and we pride ourselves on delivering the right solution and after-sales support.*

Queensland - Head Office (Australia)

Lincom Pacific Equipment Pty Ltd
92 Potassium Street, Narangba Qld 4508
PO Box 463, Deception Bay, Queensland 4508 Australia



New South Wales (Australia)

9 Doyle Avenue, Unanderra,
NSW Australia 2526
Ph: +61 2 4272 3388



Victoria (Australia)

3 Michaels Drive,
Alfredton, VIC, Australia 3350
Ph: +61 3 5335 5088



Western Australia (Australia)

13 Alacrity Place,
Henderson, WA 6166
Ph: +61 8 9452 0016



Auckland (New Zealand)

15 Cambridge Street
Pokeno, Auckland NZ 2471
Ph: +64 9236 2008



OUR MISSION

At the Lincom Group we are continually striving to show a sustained commitment to our people and processes, innovation, outstanding product quality and exceptional customer service. We aim to provide innovative, durable, premium quality products which meet our customers' needs.

OUR VALUES

Leader: Lincom Group is a leading provider of material processing equipment and services for the construction, infrastructure, forestry, recycling, quarrying and mining industries.

Dependability: Product quality and reliability are key to our success; people know they can depend on Lincom. Lincom Spare Parts is committed to providing continued customer support long after plant has been delivered, installed and commissioned.

Family: The Lincom Group remains a wholly Australian owned and operated family business, backed by a team of dedicated industry professionals. The family business is currently being managed in the second generation by Stephen Watterson who has been vigorously involved in the organization since 1998 and Roy Watterson currently serves as a chairman on the Board of Directors.

The close connection with the customers built on strong values of delivering world class products makes the Lincom Group a trusted and valued partner.

Passion: Passion is at the heart of our company. We are truly passionate about our products.

Integrity: We are honest, open, ethical and fair. In all our dealings, with both staff and customers, we are open and transparent.

Customer – focused: We aim to make the customers life easy and deliver a positive experience; making it easy for the customer purchase, utilize the product and get support when needed.

Support: Our fully trained service engineers are strategically placed. This coverage coupled with their vast knowledge and expertise enable Lincom to offer first class service support.

Long- Term Value: Our attention to the details that help your business on a practical level flows into individualised after sales programmes and a commitment to customer care. With us you get our know-how and insider information over the long-term.



MOBILE TROMMEL SCREENS

Thanks to their solid construction and simple operation the PRONAR Mobile trommel screens are used for effective separating of even the most difficult of materials which includes - municipal waste, wood waste and chips, compost, biomass, coal, soil, gravel, aggregates etc.

There are four units available depending on application and throughput desired. The replaceable drums can be manufactured to customer's requirements and available as Punch Plate type of various thickness with either square or round hole or Mesh type with replaceable mesh sections.

MPB 18.47G



MPB 20.55G



MPB 20.55GH



MPB 20.72G



MPB 18.47G

MOBILE TROMMEL SCREEN



Tracked version of MPB 18.47 can be operated via tethered or remote control.

GENERAL SPECIFICATIONS

Trommel Drum dimensions (length/width) [mm]	4700/1800
Trommel rotational speed [rpm]	up to 23
Effective sieve surface [m ²]	22,1
In-Feed hopper dimensions (length/width) [mm]	3560 / 2120
Loading height [mm]	2660
In-Feed hopper capacity [m ³]	5
Dimensions of exterior side conveyor (length/width) [mm]	5150/800
Dimensions of exterior rear conveyor (length/width) [mm]	5150/800
Width of interior longitudinal conveyor [mm]	1300
Width of interior transverse conveyor [mm]	600
Engine versions	DEUTZ (EU Stage 3B – 75HP (55,4kW)) CATERPILLAR (EU Stage 3B – 75HP (55,4kW))
Control voltage [V]	12
Central lubrication system	+
Gross weight [kg]	15300
Overall dimensions (length/width/height) [mm]	9530/2900/3450
Maximum speed [km/h]	2
Chassis	tracked



MPB 20.55G

MOBILE TROMMEL SCREEN

GENERAL SPECIFICATIONS

Trommel dimensions (length/width) [mm]	5500/2000
Trommel rotational speed [rpm]	up to 19
Effective sieve surface [m ²]	29,8
In-Feed hopper dimensions (length/width) [mm]	3900 / 2230
Loading height [mm]	2700
In-Feed hopper capacity [m ³]	6
Dimensions of exterior side conveyor (length/width) [mm]	4900/1000
Dimensions of exterior rear conveyor (length/width) [mm]	4900/1000
Width of interior longitudinal conveyor [mm]	1300
Width of interior transverse conveyor [mm]	600
Engine versions	DEUTZ (EU Stage 3B – 94HP (68kW)) CATERPILLAR (EU Stage 3B – 98HP (72kW))
Control voltage [V]	12
Central lubrication system	+
Gross weight [kg]	20000
Overall dimensions (length/width/height) [mm]	10610/2910/3450
Maximum speed [km/h]	2
Chassis	tracked

Tracked version of MPB 20.55. Thanks to independent drive machine can be moved almost any time. Chassis is controlled remotely by radio.

OPTIONS:

- Magnetic Separator
- Remote Control TG-T9-2 (10 Button)
- Wind Sifter
- Fuel Saving Sensing. Engine idles down upon sensing empty Feed Hopper for a pre-set interval and automatically resumes engine operating RPM upon sensing material being reintroduced to Hopper.
- Hydraulic Rear Support Leg
- 8kg Central Lubrication
- Additional Fuel Pump
- 6m Conveyors
- Toothed Belt



MPB 20.55GH MOBILE TROMMEL SCREEN

GENERAL SPECIFICATIONS

Trommel dimensions (length/width) [mm]	5500/2000
Trommel rotational speed [rpm]	up to 19
Effective sieve surface [m²]	29,8
In-Feed hopper dimensions (length/width) [mm]	3900 / 2230
Loading height [mm]	2700
In-Feed hopper capacity [m³]	6
Dimensions of exterior side conveyor (length/width) [mm]	6000/1000
Dimensions of exterior rear conveyor (length/width) [mm]	6000/1000
Width of interior longitudinal conveyor [mm]	1300
Width of interior transverse conveyor [mm]	800
Engine versions	DEUTZ (EU Stage 3B – 94HP (68kW)) CATERPILLAR (EU Stage 3B – 98HP (72kW))
Control voltage [V]	12
Central lubrication system	+
Gross weight [kg]	20840
Overall dimensions (length/width/height) [mm]	11620/3100/3500
Maximum speed [km/h]	2
Chassis	tracked



Same specifications as MPB 20.55G but fitted with hydraulic Rams for altering the frame angle. The higher chassis clearance allows for easier movement on uneven surfaces, easier loading and unloading on float and allows for machine levelling on sloping ground.

OPTIONS:

- 8kg Central Lubrication
- Additional Fuel Pump
- 6m Conveyors
- Toothed Belt

MPB 20.72G

MOBILE TROMMEL SCREEN

GENERAL SPECIFICATIONS

Trommel dimensions (length/width) [mm]	7200/2000
Trommel rotational speed [rpm]	up to 19
Effective sieve surface [m ²]	40,6
In-Feed hopper dimensions (length/width) [mm]	3900 / 2230
Loading height [mm]	2830
In-Feed hopper capacity [m ³]	6
Dimensions of exterior side conveyor (length/width) [mm]	4900/1000
Dimensions of exterior rear conveyor (length/width) [mm]	4900/1000
Width of interior longitudinal conveyor [mm]	1300
Width of interior transverse conveyor [mm]	800
Engine versions	DEUTZ 3,6L (EU Stage3B - 122HP (90kW)) CATERPILLAR 3,4L (EU Stage IV 122HP (90kW))
Control voltage [V]	12
Central lubrication system	+
Gross weight [kg]	20300
Overall dimensions (length/width/height) [mm]	12400/2900/3650
Maximum speed [km/h]	2
Chassis	tracked

Mobile trommel screen MPB 20.72g on tracked chassis gives highest throughput with universal mobility. Independent hydraulic drive allows to move machine in hard conditions independent of additional tractor.



SLOW-SPEED SHREDDERS

MRW 2.85G

MRW 2.1010

ADVANTAGES

- Only Quality components used (IFM, Danfoss, SKM, etc,)
- All Chassis and Working components manufactured in-house by PRONAR in their purpose-built factory insuring consistent quality build throughout the entire manufacturing process.
- Shredding Shafts and Chamber made from top-quality materials
- Shredding chamber inspection/access doors on both sides
- Cleanfix system for cleaning engine radiator and hydraulic oil cooler
- Various Breaking Bar available
- User friendly control panel
- Shaft automatic self-cleaning system
- Remote control as a standard
- Central Greasing as standard

OPTIONS

- Magnetic Separator
- Working Lights
- Different types of shafts available
- Various Breaker Bar types available



MOBILE SLOW-SPEED SHREDDER MRW 2.85

The MRW 2.85g Pronar Slow-speed shredder is designed for processing of all kinds of bulky material including Municipal Waste, C&D Waste, Pallets, Greenwaste, Roots, etc. The machine is equipped with a Caterpillar C9 diesel engine. Shredding is done by two 1700 mm long shredding shafts in the working chamber. The unit is available with a choice of Shaft configuration as well as various Breaker

Bar types to allow for flexibility depending on the material being processed as well as the end product size required. Operators have the choice of various pre-set or custom operation programs. The working parts are made of quality wear-resistant materials, ensuring long and trouble-free machine operation.

GENERAL SPECIFICATIONS

Total weight [kg]	-25000
Overall dimensions (length/width/height) [mm]	7800/2550/3200
Maximum speed [km/h]	1
Remote Control	Radio Controlled
Approach angles (front / rear)	21 / 14
Dimensions of the working shafts (length / diameter) [mm]	1700 / 685
Shaft speed max [rpm]	44
Number of shafts	2
Working chamber dimension (length / width) [mm]	1720 / 2340
Loading height [mm]	3200
Hopper capacity [m3]	~3,0
Transport belt width [mm]	1400
Control voltage [V]	24
Central lubrication system	+
Belt speed regulation	+
Operation signal lights	+
Hydraulically lifted hopper	+
Loading hopper and shafts made of wear-resistant steel	+
Remote control	+
Bar between shafts	+
Magnetic separator over the conveyor	+
Working chamber additional covers	+
Working area additional lighting	+
Shafts according to customer requirements	+
Diesel engine	Caterpillar
Emission category	EU Stage 4
Maximum power / [HP (kW) / rpm]	405 (298) /2200
Number of cylinders	6
Displacement [l]	9,3
Fuel tank capacity [l]	700
Cleanfix system for engine cooling system	+
Cleanfix system for engine cooling system	+
Lighting engine compartment	



MOBILE SLOW-SPEED SHREDDER

MRW 2.1010

The MRW 2.1010 Pronar Slow-speed shredder is designed for processing of all kinds of bulky material including Municipal Waste, C&D Waste, Pallets, Greenwaste, Roots, etc.. The machine is equipped with a Volvo Penta diesel engine. Shredding is done by two 2440 mm long shredding shafts in the working chamber. Each Shaft is fitted with 10

rows of teeth and each row is fitted with 10 teeth Operators have the choice of various pre-set or custom operation programs. The working parts are made of quality wear-resistant materials, ensuring long and trouble-free machine operation.

ADVANTAGES

- Only Quality components used (IFM, Danfoss, SKM, etc.)
- All Chassis and Working components manufactured in-house by PRONAR in their purpose-built factory insuring consistent quality build throughout the entire manufacturing process.
- Shredding Shafts and Chamber made from top-quality materials
- Shredding chamber inspection/access doors on both sides
- Cleanfix system for cleaning engine radiator and hydraulic oil cooler
- Various Breaking Bar available
- User friendly control panel
- Shaft automatic self-cleaning system
- Remote control as a standard
- Central Greasing as standard

OPTIONS

- Magnetic Separator
- Working Lights
- Different types of shafts available
- Various Breaker Bar types available.

GENERAL SPECIFICATIONS

Total weight [kg]	-40000
Overall dimensions (length/width/height) [mm]	9500/3000/3200
Maximum speed [km/h]	1
Remote Control	Radio Controlled
Approach angles (front / rear)	21 / 14

TRANSPORT MATERIAL

Dimensions of the working shafts (length / diameter) [mm]	2400 / 850
Shaft speed max [rpm]	34
Number of shafts	2
Working chamber dimension (length / width) [mm]	2440 / 2880
Loading height [mm]	3200
Hopper capacity [m3]	~4,5
Transport belt width [mm]	1400
Control voltage [V]	24
Central lubrication system	+
Belt speed regulation	+
Operation signal lights	+
Hydraulically lifted hopper	+
Loading hopper and shafts made of wear-resistant steel	+
Remote control	+

ACCESSORIES & OPTIONAL

Bar between shafts	+
Magnetic separator over the conveyor	+
Working chamber additional covers	+
Working area additional lighting	+
Shafts according to customer requirements	+

ENGINE

Diesel engine	Volvo Penta
Emission category	EU Stage 2
Maximum power / [HP (kW) / rpm]	768 (565) /1850
Number of cylinders	6
Displacement [l]	16.1
Fuel tank capacity [l]	1200
Cleanfix system for engine cooling system	+
Cleanfix system for hydraulic oil cooler	+
Lighting engine compartment	+



KIVERCO

KIVERCO, consult, design, engineer and build uncompromisingly robust recycling plant for the waste processing industry. KIVERCO have been manufacturing static and mobile recycling plants for over 25 years. Whether you are a small or a large plant operator, Kiverco design and manufacture recycling plants to suit all types of waste streams. KIVERCO plant machinery will help you

achieve maximum uptime which means maximum output and faster financial returns. KIVERCO equipment deliver the same levels of plant strength and reliability to all waste processors, from small start-up companies requiring a simple manual sorting line through to advanced, high capacity systems requiring the latest in automated technology, safety control and plant performance analysis.



COMPACT PLANT RANGE

KIVERCO has developed the Compact Plant range. A mobile recycling plant with all the benefits of a high-performance stationary plant. This new range of products, operated as single units or when combined, can be set up within hours.

Designed and built by the same team that has successfully produced over 250 static plants since Kiverco began, the initial range includes:

- Feeder Trommel
- Picking Station
- Density Separator

All components come with various options and configurations, offering the customer maximum flexibility to obtain a bespoke solution for their waste handling needs.

All models in the Kiverco Compact Range can be used alongside other mobile equipment or can be combined to form A COMPLETE RECYCLING SYSTEM.



FEEDER TROMMEL FT620

The Compact FT Feeder Trommel combines fast, simple and safe on-site set-up capability with the already proven design and build quality of Kiverco's successful static plants, to give long lifespan, high performance and rugged reliability. The modular design enables ease of set up and rapid relocation if required. This innovative new design is truly adaptive, with 2 or 3 way split, and is ideal for use across a wide range of applications.

The Compact FT carries out the initial screening of different sized material. This machine can be combined to form a

complete recycling system along with the Compact PS Picking Station and Compact DS Density Separator.

- Fully enclosed with roof and outlet covers, which greatly minimises noise and dust
- Diesel electric powered with the option of mains electric power.
- Pre-wired 'Plug and Play' Design
- Wide Core Radiator
- Heavy Duty Feeder and Drum



PICKING STATION

The Compact PS Picking Station offers unrivalled set-up simplicity, operator comfort, safety and environmental protection. It combines air separation, magnetic separation and manual sorting – all in one compact unit.

- Integrated air separation to produce clean product
- Integrated magnetic separation to recover ferrous metals
- 2 to 6 bay sorting to recover clean stone, wood, paper, plastics, card etc
- Pre-wired 'Plug and Play' Design
- Variable Speed 1200 mm Wide Picking Belt
- Wide Core Radiator
- Diesel Electric Drive



STATIC PLANT



Kiverco build solid and robust Material Recovery Facilities and Recycling Plant for the following waste streams:

- Construction & Demolition (C&D)
- Commercial & Industrial (C&I)
- Municipal Solid Waste (MSW)
- Dry Mixed Recyclables (DMR)
- Single Stream Recycling
- Green Waste / Composting / Biomass
- RDF / SRF Production
- Mechanical Biological Treatment with Biodrying
- Scrap Metal
- Incinerator Bottom Ash

DENSITY SEPARATOR

The Compact Density Separator has been designed to efficiently separate material into usable fractions, using the latest in air separation technology.

This machine can be combined to form a complete recycling system along with the Compact FT Feeder Trommel and Compact PS Picking Station.

FEATURES & BENEFITS

- Fully adjustable
- Pre-wired 'Plug and Play' design
- Diesel electric drive
- Wide core radiator
- Monitoring of material flow
- Twin recirculating air blowers





MORBARK 6400XT WOOD HOG HORIZONTAL GRINDER

The newest model in Morbark's next-generation platform of horizontal grinders, the 6400XT Wood Hog includes many feature improvements first introduced in the smaller 3400XT, focusing on production, operator-friendliness, ease of maintenance and transportability. The infeed bed is 24 inches (60.96 cm) longer than previous Morbark grinders in the 1,000-plus horsepower range and has sloped sides. This configuration improves operator sight lines for more efficient loading of material. Standard on the 6400XT is a removable infeed chain return floor, which allows excess material to fall away to minimize the wear on the floor, bed chain and inserts, particularly useful in land-clearing or other applications with dirty material.

MORBARK INTEGRATED CONTROL SYSTEMS (MICS)

Automatically adjusts feed rates and monitors pressures and feed wheel position to maximize production and engine efficiency.

EXTENDED MAINTENANCE PLATFORM

The area between the hood and the engine has been reconfigured to provide an additional 31.5" (80 cm) of working space for better access for maintenance and changing screens.

SLOPED INFEED SIDES

Sloped infeed sides and an additional 24" (60.96 cm) infeed length gives the operator improved visibility and loading efficiency.

EXTERNAL ADJUSTABLE BREAK-AWAY TORQUE LIMITER

Flexible, easily adjustable torque limiter helps protect the driveline and hammermill from damage.

FEATURES & BENEFITS

Variable speed infeed system consists of one 40" (101.6 cm) diameter top compression feed roll with internal drive and a 16'6" long x 60 3/8" (5 m x 153.3 cm) wide live floor equipped with four strands of WDH-120 chain in a staggered configuration

- Hydraulic hinged and locking door allows quick and easy access for changing grates
- Independent hammermill drive tensioning system for ease of adjustment
- Removable infeed chain return floor
- Automatic reversing fan and dust suppression systems
- Hydraulically operated debris containment door
- Discharge system consists of a hydraulically driven, horizontal 48" x 23' (121.9 cm x 7 m) aggregate belt conveyor discharging onto a 40" (91.44 cm) wide x 29' (8.8 m) long discharge stacking conveyor with hydraulic fold for transport
- Remote control with tethered back-up system
- Magnetized end pulley with collecting slide tray for ferrous metal removal
- 11-HP (8.2 kW) air compressor with lockable enclosure
- PT Tech HPTO21 hydraulic clutch
- Hydraulic rod puller

SPECIFICATIONS

Length	44'/13.14 m
Height	11'10"/3.61 m
Width:	11'5 1/2"/3.49 m
Weight (approx):	96,500 lb/43,772 kg
Engine:	CAT
Horsepower:	1,050 to 1,200 HP/ 783 to 895 kW
Fuel capacity (tank):	365 gallons/1,382.68 L
Hydraulic oil capacity:	250 gallons/946.35 L
Infeed opening:	58" x 48"/147.32 cm x 121.92 cm
Screen Area:	5,406 sq in/ 34,877 sq cm
Tracks:	325L Caterpillar Undercarriage



MORBARK 3400XT WOOD HOG HORIZONTAL GRINDER

Morbark provides the features customers want and the versatility they need, while staying true to their proven technology. One of the most important features of the 3400XT is that it can be made as narrow as 8'4" (2.53m), making it within the legal transport width in any country, no matter what engine is used. This model accommodates engines from 520 to 800 horsepower (388 to 596 kW), so it is ideal for a broad range of applications in a wide variety of markets worldwide.

SLOPED INFEED SIDES

Sloped infeed sides and an additional 24" (60.96 cm) infeed length gives the operator improved visibility and loading efficiency.

EXTENDED MAINTENANCE PLATFORM

The area between the hood and the engine has been reconfigured to provide an additional 12 inches (30.48 cm) of working space, for better access to components for general maintenance or to change screens.

MORBARK INTEGRATED CONTROL SYSTEMS (MICS)

Automatically adjusts feed rates and monitors pressures and feed wheel position to maximize production and engine efficiency.

FEED SYSTEM

Internal planetary drive with no chains and sprockets means lower maintenance, more torque and better durability.

EXTERNAL ADJUSTABLE BREAK-AWAY TORQUE LIMITER

Flexible, easily adjustable torque limiter helps protect the driveline and hammermill for damage.

SPECIFICATIONS

Length (transport)	38'2" (11.63 m)
Length (operating)	57'9" (17.37 m)
Height (transport)	12' (3.66 m)
Height (operating)	16' ¼" (4.95 m)
Width	8'6" (2.59 m)
Gross weight tracked (approx.)	71,900 lbs (32,613 kg)
Engine	CAT
Horsepower	520 to 800 HP (388 to 596 kW)
Fuel Capacity (tank)	300 gallons (1,135 litres) Hydraulic Oil: 100 gallons (378 litres)
Screen Area	3,785 sq in (24,419 sq cm)
Tracks	320L Caterpillar undercarriage with double grousers

- Morbark Integrated Control Systems (MICS)
- Sloped infeed sides and an additional 24" (60.96 cm) infeed length gives the operator improved visibility and loading efficiency
- Extended platform area between the hood and engine for performing maintenance
- Hydraulic hinged door allows quick and easy access for changing grates
- Removable infeed chain return floor
- Automatic reversing fan system
- Dust suppression system
- Hydraulically operated debris containment door
- Remote control with tethered back-up system
- Magnetized end pulley with collecting slide tray for ferrous metal removal
- 11-HP (8.2 kW) air compressor with lockable enclosure



TARGO 3000

POWERFUL SHREDDER WITH STRONG UNDERCARRIAGE

The Targo 3000 is a single shaft shredder with a hydraulically controlled shredding comb suitable for the most difficult applications. The comb opens automatically if necessary in order to avoid damages by large unshreddable contaminants. All the wear parts are quickly and easily replaceable so the machine can be adjusted to the different shredding tasks. The engine and aggregates of the Neuenhauser single-shaft-shredder are easily accessible from two sides.

The TARGO 3000 tracked can master the most difficult of tasks in waste management as a single-shaft shredder. The high-performance machine shreds waste wood, green waste, bulky waste, pallets and other materials for the benefit of cost-saving and environmentally compatible preparation. The chain chassis ensures easy progress even on demanding terrain.

FEATURES

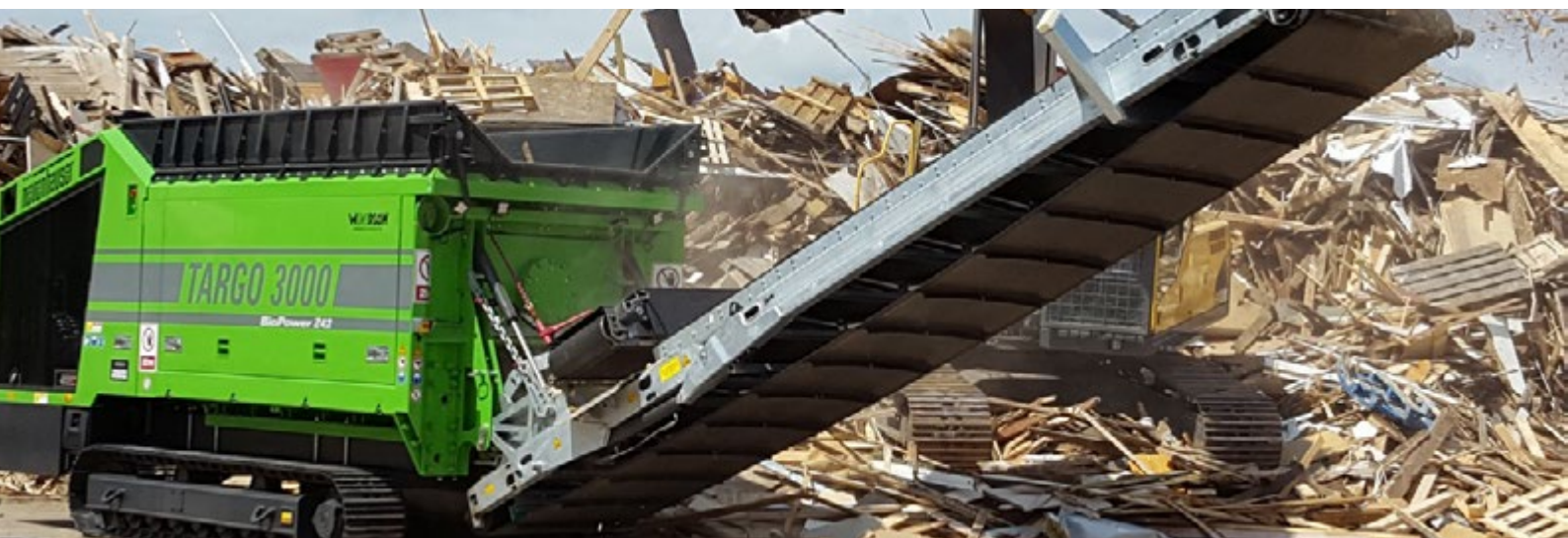
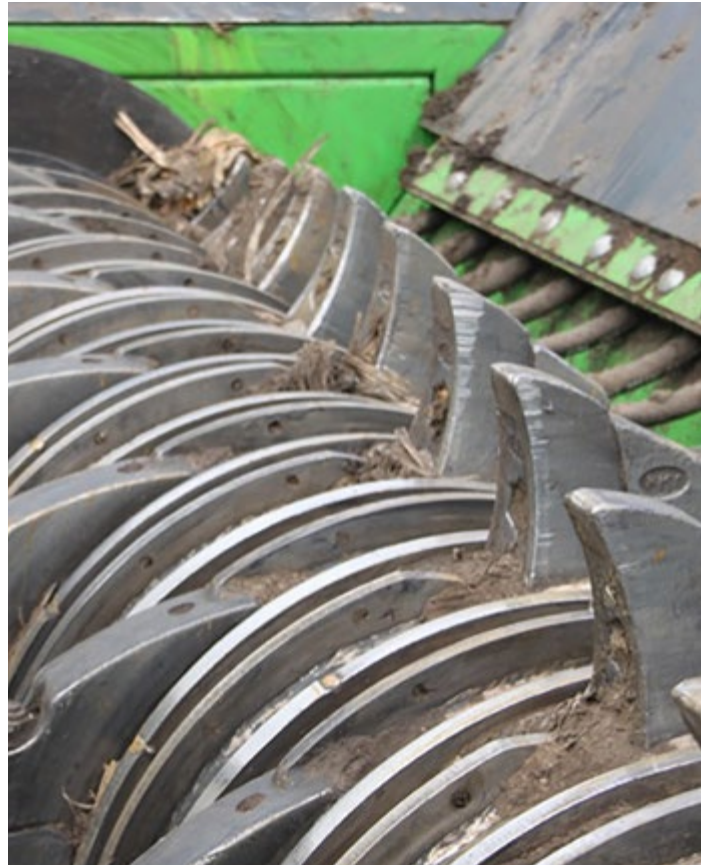
- High capacity 80tph* (depending on material)
- Direct Drive
- Full torque reverse function
- Single shaft shredder
- Adjustable gap between shaft & counter comb
- Independent start on engine & shredder shaft
- Easy dual-sided engine access
- Programmable PLC controls
- Self-cleaning drum brushes
- Continuous automatic control of drum & hopper speed
- Extra-long discharge conveyor for easier loading & stockpiling
- Suitable for organic & MSW applications

OPTIONS

- Wireless remote control
- Remote start / stop

SPECIFICATIONS

Weight	66,138lbs
Transport length	25' 6"
Transport width	9' 6"
Transport height	11' 2"
Working length	39' 8"
Working width	9' 9"
Working height	10' 8"
Shredder	Single Shaft



STAR SCREEN 3F

3 FRACTION TRACK STAR SCREEN

The Neuenhauser Super Screener Star Screen provides superior screening in the most difficult of materials. The unit is designed and built specifically for compost, topsoil, wood chippings, mulch, etc.

The Neuenhauser Super screener is available as either a 2 or 3 Fraction unit.

The Neuenhauser 3 Fraction Star Screen has a capacity of up to 400m³/hr, depending on material type being processed and Stars Decks being used. It is diesel hydraulic Drive and has a full automatic ON/OFF sequence or, if so desired, individual components can be operated manually. The Control Panel has 5 saved Recipes that control the Star Deck Speed Settings and in turn the End Product size. These Recipes can be altered according to Customer requirements.

The optional Wind-Sifter is Hydraulic Drive and can be located in such a position that it can remove Plastics/Papers/Contaminants from both the Mid and Oversize material.

FEATURES

- Quick set up time typically under 15 minutes
- High production capacity
- Easily accessible engine
- Easy access Hydraulics
- Feed regulating auger
- Modular decks
- Quick release on hydraulics
- Reversible radiator fan

- Programmable PLC control system
- Large stockpiling capacity
- Low feed-in height
- One piece collection conveyor
- Hydraulic folding conveyors

OPTIONS

- Remote control tipping grid 4"
- Vibrating Grid
- Wind sifter
- Track or Wheel
- Variable size stars

SPECIFICATIONS

Weight	53,000lbs
Transport length	44' 9"
Transport width	9' 5"
Transport height	12' 1"
Working length	52' 5"
Working width	35' 2"
Working height	14' 4"
Fines Deck	22' 6" x 4' 1"
Midsized Deck	12' x 4' 1"



STAR SCREEN 2F

2 FRACTION TRACK STAR SCREEN

The Neuenhauser 2 Fraction StarScreen provides superior screening in the recycle industry. Designed to process a primary grind to produce a finished mulch product and oversize for regrind. The screening efficiency reduces regrind costs by removing all fines and finished mulch leaving only a small percentage of oversize. Neuenhauser Starscreen is designed and built specifically for topsoil, recycling, wood chippings, mulch and compost applications.

FEATURES

- Quick set up time typically under 15 minutes
- Easy access powerunit & hydraulics
- Feed regulating auger
- Modular deck
- Quick release hydraulics
- Turbo 11 air cooler
- Reversible radiator fan
- Programmable PLC controls
- Large stockpiling capacity
- Low feed in height
- Low maintenance
- Suitable for topsoil, mulch and compost applications
- Quick set-up time

SPECIFICATIONS

Weight	48,500lbs
Transport length	44' 3"
Transport width	9' 5"
Transport height	12' 1"
Working length	51' 8"
Working width	18' 10"
Working height	14' 4"
Screen Deck	22' 6" x 4' 1"



POWERSCREEN

Powerscreen offers solutions for the recycling of many types of materials – from Construction and Demolition Waste (C&D Waste), to Soils and Composts. These materials are processed using a series of crushers and screens to provide materials such as road base.

Powerscreen equipment can be used in the reduction and separation of recycled raw materials into usable secondary aggregates or sands. Other processes suited to Powerscreen equipment can include the sizing of soils, composts and wood bark to make up finished material that can be used in parks, sports fields, golf courses and garden areas.

Warrior Screen

Warrior 600

Warrior 800

Warrior 1200

Warrior 1400X & 1400XE

Warrior 1800

Warrior 2100

Warrior 2100 SPALECK

Warrior 2400

Crusher - Jaw Crushers

Premiertrak 300 & R300

Premiertrak 400X & R400X

Premiertrak 400X Post-screen

Premiertrak 600 & 600E

Crusher - Impact Crushers

Trakpactor 260 & 260SR

Trakpactor 320 & 320SR

Trakpactor 550

Trakpactor 550SR

XV350

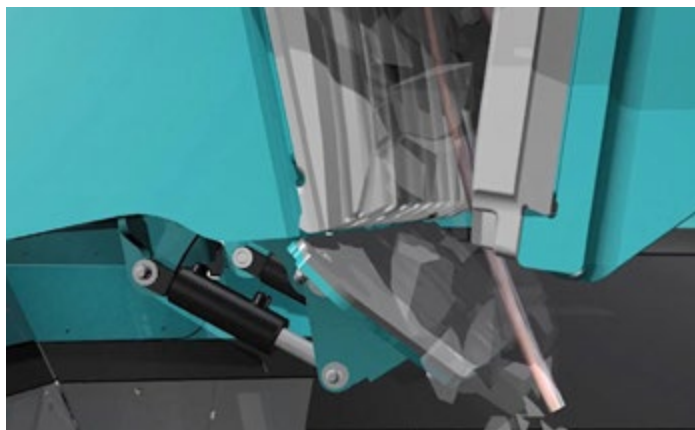
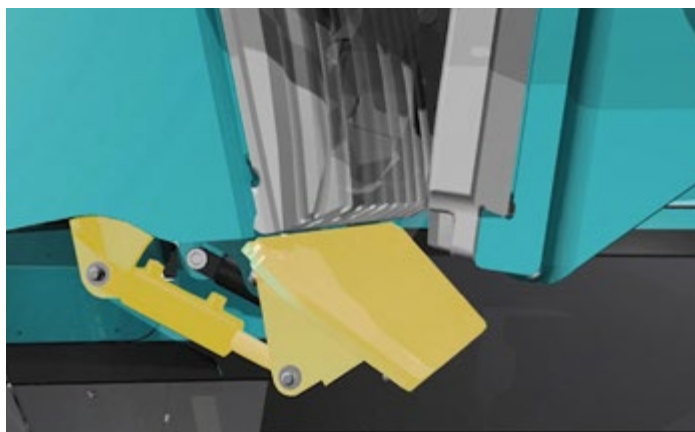


BENEFITS OF THE PREMIERTRAK RANGE FOR RECYCLING



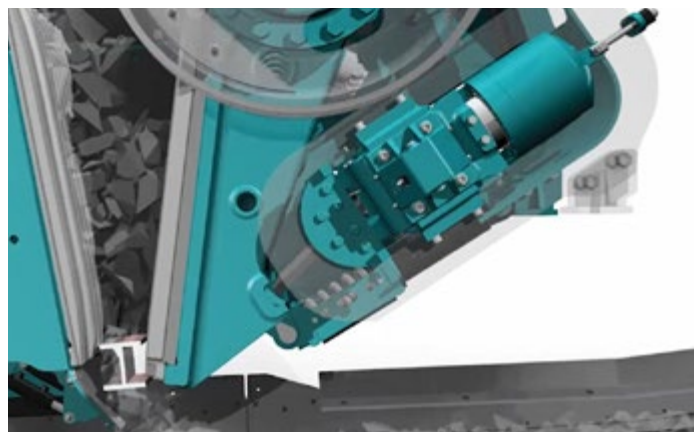
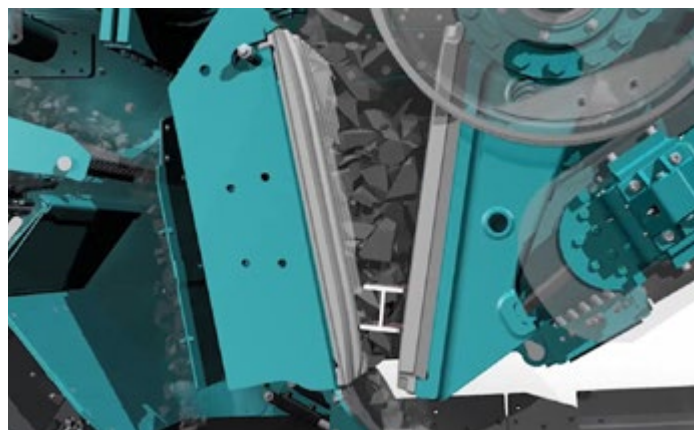
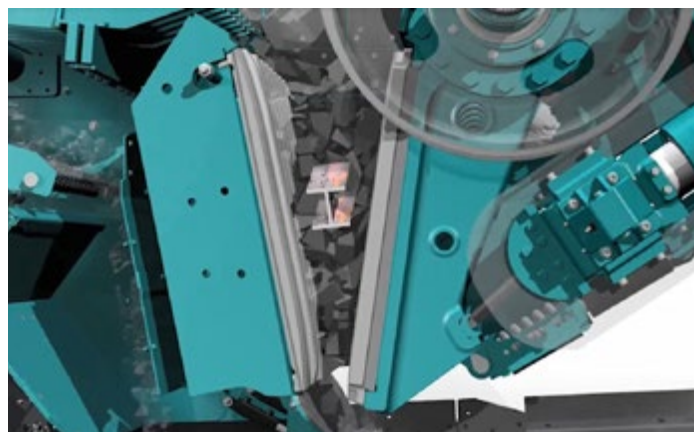
HYDRAULIC DEFLECTOR PLATE:

The hydraulic adjustable deflector plate increases belt protection in recycling applications. The deflector plate working angle can be adjusted from the PLC control panel system. The plate can be positioned in underneath the jaw and deflects falling material onto the product belt, and the result is that rebar and other contaminants cannot damage the belt and instead are sent up the product conveyor to be collected by the over band magnet.



HYDRAULIC OVERLOAD PROTECTION:

The system is designed to prevent damage to the jaw chamber caused by uncrushable objects such as a tramp metal. The jaw operates via hydraulic cylinder pressure if a contaminate enters the jaw creating a hydraulic spike the jaw discharges oil back to the tank from the cylinders, the jaw opens up allowing the contaminated material to pass through without causing damage.



PREMIERTRAK 300/R300



FEATURES & BENEFITS

- Ground level quick set-up with hydraulic folding feed hopper with hydraulic locking pins
- Heavy duty wear resistant feed hopper
- Stepped grizzly feeder with under-screen
- Wide bypass chute to optimise material flow
- Aggressive crushing action with high swing jaw encouraging material entry into crushing chamber
- Fully hydraulic crusher setting adjustment
- Improved manganese liner retention, protects jaw supports on both swing & fixed jaws
- Excellent under crusher access for removal of wire with hydraulic raise lower product conveyor
- Angle adjustable product conveyor, lowers for access & transport
- Low fuel consumption due to highly efficient direct drive system and low engine RPM
- Easily accessed power unit canopy
- PLC control system with auto start facility
- Remote control via umbilical
- Dust suppression system
- Fitted with Powerscreen Pulse Telematics system

OPTIONS

- Deflector plate under crusher
- Dirt conveyor
- Single pole/twin pole magnet
- Radio remote control
- Belt weigher
- Electric refuelling pump
- Hydraulic water pump
- Urea refuelling pump
- Pre-screen system
- Stockpiler drive

APPLICATIONS

- Blasted rock
- River rock
- C & D waste
- Foundry waste
- Processed ores
- Processed minerals

PREMIERTRAK	300	R300
Weight (est.) with side conveyor & magnet	35,000kg (77,161lbs)	36,580kg (80,645lbs)
Transport width	2.85m (8'6")	2.55m (8'5")
Transport length	14.1m (46'3")	14.6m (47'11")
Transport height	3.4m (11'2")	3.2m (10'6")
Working width with side conveyor	6.28m (20'7")	6.28m (20'7")
Working length	14.1m (46'3")	14.7 (48'3")
Working height	3.4m (11'2")	3.85m (12'8")



CRUSHER - JAW

PREMIERTRAK 400X & R400X



The Powerscreen® Premiertrak 400X range of portable jaw crushers are designed for medium scale operators in quarrying, demolition, recycling and mining applications. The range includes the Premiertrak 400X with hydraulic adjust and the Premiertrak R400X with hydraulic release. User benefits include track mobility for a quick set-up time (typically under 30 minutes,) hydraulic crusher setting adjustment for total control of product size and crusher overload protection to prevent damage by uncrushable objects.

FEATURES & BENEFITS

- High output and excellent reduction capability
- Wear resistant hydraulic folding feed hopper with hydraulic wedge fixing system
- Excellent under crusher access for removal of wire with hydraulic raise lower product conveyor
- Stepped self-cleaning grizzly feeder with under feeder screen option
- Deep fines chute to reduce material blockages
- Improved bypass chute to increase material flow
- Aggressive crushing action with high swing jaw encouraging material entry into crushing chamber
- Hydraulic crusher setting adjustment
- Improved manganese liner retention, protects jaw supports on both swing & fixed jaws
- Economical to operate with low fuel consumption due to highly efficient direct drive system
- Angle adjustable product conveyor
- Easy access power unit canopy
- PLC control system with auto start facility
- Remote control via umbilical
- Dust suppression system
- Easily set up
- Fitted with Powerscreen Pulse Telematics system
- 650mm wide bypass conveyor
- Fully inclined catwalks

*Depends on application

OPTIONS

- Patented hydraulic deflector plate under crusher
- Side conveyor /extended side conveyor
- Single pole/twin pole magnet
- Radio remote control
- Belt weigher
- Electric refuelling pump
- Hydraulically driven water pump

- Wire mesh for underscreen
- Super tooth or multi tooth jaw plates
- Extended hopper
- Post-screen available (will add est 6 tonnes to a machine weight)
- Unblock motor
- Extended main conveyor
- Over crusher level sensor
- Patented hydraulic crusher overload system, ideal for applications with un-crushable material in feed, 200mm³.
- Pre-screen available

SPECIFICATIONS

Weight (Est)	(Tier 3) 46,300kgs (102,274lbs) (Tier 4F) 46,500kg (102,514lbs)
Transport width	2.8m (9'2")
Transport length	15.02m (49'3")
Transport height	3.4m (11'2")
Working width with	4.33m (14'2") (with side conveyor)
Working length	14.66m (48'1")
Working height	4.13m (13'6")

*All information subject to machine configurations & specifications ordered.



CRUSHER - JAW

PREMIERTRAK 600 & 600E



The Powerscreen® Premiertrak 600 range of high performance jaw crushers are designed for large and medium scale operators in quarrying, demolition, recycling & mining applications.

The range includes the Premiertrak 600 & Premiertrak 600E both equipped with the advanced high performance 1200mm x 820mm Terex chamber. Built for the toughest of applications, the robust construction and modern design of the Premiertrak 600 ensures optimum performance, reliability and efficiency. The Premiertrak 600E comes complete with an onboard diesel generator. The machine can be powered from this, or from an external power supply. There is sufficient excess power available to run a second machine such as a screener. This versatility along with the electrically driven crusher and conveyors makes the PT600E highly efficient, economical and environmentally friendly.

FEATURES & BENEFITS

- Output potential up to 600tph (661 US tph) (Depending on application & CSS)
- Ground level quick set-up with hydraulic folding feed hopper with hydraulic locking system
- Heavy duty wear resistant feed hopper
- Stepped self-cleaning grizzly feeder with under feeder screen
- Wide bypass chute to optimise material flow
- Aggressive crushing action with high swing jaw encouraging material entry into crushing chamber
- Fully hydraulic crusher setting adjustment
- Excellent under crusher access for removal of wire with hydraulic raise lower product conveyor
- Angle adjustable product conveyor, lowers for access & transport
- Low fuel consumption due to highly efficient direct drive system and low engine RPM
- Easily accessed power-unit canopy
- Modern & user-friendly PLC control system with auto start facility
- Remote control via umbilical
- Dust suppression system
- Fitted with Powerscreen Pulse Telematics system

OPTIONS

- Pre-screen system

- Wire mesh for underscreen (standard)
- Quarry tooth, pyramid tooth or heavy-duty fixed jaw plates
- Deflector plate under crusher
- Side conveyor
- Single pole overband magnetic separator
- Twin pole overband magnetic separator
- Belt weigher
- Electric refuelling pump
- Electric urea pump
- Hydraulic water pump
- Radio remote control
- Stockpiler drive (Tier 4 machines only)

SPECIFICATIONS

Premiertrak 600

Weight (Est) (with side conveyor & magnet)	68,875kg (151,843lbs)
Transport width	3m (9'10")
Transport length	17.1m (56'1")
Transport height	3.8m (12' 5")
Working width with	8.09m (26'5")
Working length	16.63m (54'7")
Working height	4.49m (14' 9")

SPECIFICATIONS

Premiertrak 600E

Weight (Est) (with side conveyor & magnet)	72,725kg (162,535lbs)
Transport width	3.12m (10'3")
Transport length	17.1m (56'1")
Transport height	3.8m (12' 5")
Working width with	8.09m (26'5")
Working length	16.63m (54'7")
Working height	4.49m (14' 9")

*All information subject to machine configurations & specifications ordered.



CRUSHER - IMPACT TRAKPACTOR 320SR



The Powerscreen® Trakpactor 320 is a mid-sized horizontal impact crusher designed to offer operators and contractors both excellent reduction and high consistency of product shape for performance in quarry and recycling applications. With track mobility the plant is capable of working in the most demanding environments and features a rapid set-up time, fuel efficient direct drive system and excellent throughput capacity.

The Powerscreen® Trakpactor 320SR features a screen and recirculating (SR) conveyor which returns oversized product to the crusher for further reduction.

FEATURES & BENEFITS

- Output Potential: up to 320 tph (352 US tph)
- Suitable for a variety of feed materials including recycling, demolition and quarry applications
- Bolt in cartridge grizzly - 42mm nominal spacing
- Load management system to control feeder speed
- 4 bar rotor and twin apron design
- Crusher speed variation through user friendly PLC control system
- Modular conveyor with raise/lower facility to aid clearance of rebar
- Economical to operate with a highly fuel-efficient direct drive system
- Double deck grizzly feeder with under screen (Trakpactor 320)
- Double deck 11' x 5' post screen (XH320SR)

OPTIONS

- Full & half size chrome, martensitic, austenitic & ceramic blow bars
- Grizzly cartridges
- Independent hydraulic pre-screen (Trakpactor 320)
- Underpan feeder (Trakpactor 320)
- Pre-screen cassettes - punch plate and grizzly (Trakpactor 320)
- Punch plate options 30, 45 or 60mm
- Blanking plates/mats for grizzly
- Feeder underscreen wiremesh 10, 20, 30, 40, or 50mm
- Single pole/twin pole magnet
- Belt scale

- Refuelling pump
- Hydraulic water pump
- Radio remote control
- Dust hood on product conveyor
- Plant lighting
- Hopper extensions
- Dirt conveyor & extended dirt conveyor (Trakpactor 320)
- Extended product conveyor

SPECIFICATIONS

Trakpactor 320

Weight	35,280kg (77,779lbs)
Transport width	2.55m (8'4")
Transport length	14.78m (48'6")
Transport height	3.46m (11'4")
Working width with	5.61m (18'5") with side conveyor
Working length	14.36m (47'1")
Working height	3.9m (12'10")

SPECIFICATIONS

Trakpactor 320SR

Weight	46,240kg (101,941lbs) (Vibrating grizzly feeder) 48,600kg (107,144lbs) (Pre-screen)
Transport width	3.1m (10'2")
Transport length	17.58m (57'8")
Transport height	3.4m (11'2")
Working width with	5.82m (19'1") with side conveyor
Working length	17.22m (56'6")
Working height	4.7m (15'5")

*All information subject to machine configurations & specifications ordered.



WARRIOR SCREEN 1800

Designed for medium to large operators, where high capacity and throughput are paramount, the Powerscreen® Warrior 1800 is a tough, heavy duty machine built for screening, 2 or 3 way splitting and stockpiling in quarrying, recycling, construction and demolition aggregates and top soil applications.

With low ground pressure crawler tracks the Warrior 1800 is highly mobile. The versatile screen accepts a wide range of media options including bofor bars, finger screens, woven mesh and punch plates.

FEATURES & BENEFITS

- Output potential up to 600 tph (661 US tph)
- Heavy duty, incline belt feeder with hydraulic hopper sides
- Hydraulic folding conveyors with excellent stockpiling capacity
- Heavy duty, adjustable angle, grease lubricated, 2 bearing, 2 deck screen box
- Jack up screen facility to aid mesh changes
- Hydraulic “slide out facility” on oversize tail conveyor to ease mesh changes
- Screen walkway and access ladder
- Engine protection shut down system

OPTIONS

- High capacity incline apron feeder

- 2 or 3 way split configuration
- Dual power (additional electric hydraulic drive)
- Auto lubrication system
- Radio controlled tracking
- Wide range of screen media
- Quick release screen wedge tensioning
- Dust suppression
- Telescopic side conveyor option

SPECIFICATIONS

Warrior 1800 3 Way Split

Weight	29,000 kg (64,934lbs)
Transport width	2.96m (9'8")
Transport length	15.38m (50'6")
Transport height	3.39m (11'2")
Working width	12.62m (41'4")
Working length	14.3m (47'2")
Working height	4.57m (14'11")
Screenunit	4.8m x 1.5m (16'x5')

*All information subject to machine configurations & specifications ordered.





At Lincom Group we take pride in providing effective solutions within the forestry and recycling industry. We offer a wide range of fit for purpose equipment for sale or hire that will be cost-effective for your business and provide many profitable applications.



KIVERCOTM
RECYCLING PLANT



MORBARK[®]

1800 182 888
www.lincom.com.au