

**THOR**<sup>®</sup>  
G L O B A L

**MOVE  
MOUNTAINS.**



**THOR<sup>®</sup>**

# MOVE MOUNTAINS.

HELPING BULK MATERIAL HANDLERS  
MOVE MORE THAN JUST MATERIALS.







## **BULK MATERIAL HANDLING IS HARD WORK.**

**MOVING VAST QUANTITIES OF NATURAL RESOURCES AND RAW MATERIALS IS VITAL TO THE ECONOMY. YET THESE DAYS IT SEEMS LIKE A THANKLESS JOB...**

Rising costs in transportation, labor and equipment combined with global competition is making it difficult to be profitable. Increased legislation and regulatory standards complicate things even more. So to win in this business you need to take control and seize opportunity.

In times like these, you need to rely on a leader - someone with a proven track record of inventiveness who understands your specific issues - someone who is looking forward and blazing a new path. You can no longer settle for the same old ideas or short-term solutions. Success comes from looking at the problems in a new way and developing tools that do more with less.

Our mission is to equip our clients with the tools to handle bulk material and the ideas to move their business.

Business is about more than the tools you use. But we also know that smart

choices about machinery will impact your bottom line. Thor has built a reputation on applying intelligence to the complex issues of bulk material handling. At Thor, you'll find ideas that defy convention and make a real difference. Our machines are impressive, safe & easy to use and customizable. They're also 100% bulletproof. It's easy to design something complicated. It's much more difficult to create something that simply works.

We're not just selling a piece of machinery. We're a passionate partner with over 40 years invested in research that solves the issues you face every day. We're creating opportunity and you need to seize it.

**TOGETHER WE CAN  
MOVE MOUNTAINS.**



## EXPERIENCE AND HISTORY.

**FOUNDED IN 1969, THOR GLOBAL HAS GROWN SIGNIFICANTLY OVER THE YEARS TO PROVIDE INNOVATIVE SOLUTIONS AND TECHNOLOGY WORLDWIDE.**

Founder of the company Thor Johanssen, was born and raised in Denmark. He grew up with a family business (a builder of material handling equipment in Denmark), served an apprenticeship there, and studied mechanical engineering at the Danish Technical Academy.

In 1973 Thor Steel and Welding Ltd. became incorporated and the manufacturing facility in Mississauga Ontario was opened. The company called themselves Thor Group with divisions Thor Cranes, Thor Conveyors and Thor Aggregate Equipment.





With growing experience in the aggregate industry, Thor developed the first ever side-fold conveyor system in 1975. At the time, this was a much more cost-effective method of making conveyors transport-ready than the classic top fold designs being employed by other manufacturers.

Thor Johannsen's early success spurred the development of other rugged products such as the Viking series of screeners and many turnkey load-out operations that are still operating smoothly today, over 40 years later.

In 2000, the name Thor Steel Welding Ltd. was officially changed to Thor Global Enterprises Ltd. and shifted its primary focus towards developing Telescopic Conveyors and new innovations.

Today, Thor Global continues to innovate, expanding our product offerings to meet the unique demands of our customers from many verticals (i.e. aggregate, agriculture & recycling, mining, and ports & terminals) all over the world.

# THOR MOVE MOUNTAINS.

OUR MISSION IS TO EQUIP OUR CLIENTS WITH THE TOOLS TO HANDLE BULK MATERIAL AND THE IDEAS TO MOVE THEIR BUSINESS.



## **SAFETY FIRST** GIVING YOU PEACE OF MIND.

Safety is an important consideration in the design process of all of our products. The location of our tensioning systems and larger support widths for stability are examples of how simplicity has inspired safer products for our customers.

## **DURABILITY & LONGEVITY**

### **LESS STRESS. LIVE LONGER.**

High quality components and unique design features are the distinguishing characteristics of our products. Engineers are constantly working to alleviate stresses on machines in order to provide a more durable and long-lasting product. Less stress is accomplished with a proper axle design and the use of less steel.



## **LOW MAINTENANCE**

### **EVERYTHING DESIGNED.**

In order to ensure a more reliable product, we simplify our features in a way that makes our machines easier to maintain. Examples of simplified features are as follows:

- UHMW electrical cable harness pulley vs. an e-chain cable harness
- Electric vs. hydraulic
- Single stage vs. multi stage
- Ultrasonic sensors vs. photo eye and mechanical mercury

## **SMART DESIGN**

### **HEAVIER DOESN'T MEAN HEAVIER DUTY.**

Features like the patented LES enable us to use less steel, which makes our products more highway portable. We also use 60,000psi steel, which is lightweight and strong.

## **100% BULLET PROOF**

### **CUSTOMIZED AND TRIPLE-TESTED.**

In order to ensure a bulletproof product, our engineers use 3 types of testing on all new designs (including custom projects) before they are released.

## **EXPERIENCE COUNTS**

### **WE INVENTED IT. WE UNDERSTAND IT.**

Thor Global has been designing bulk material handling equipment for over 40 years. Our experience with tower cranes and the aggregate industry led to the invention of telescopic technology. This revolutionary concept has inspired many innovative products and features.

## **SERVICE: MORE THAN JUST A WORD**

### **TALK TO US. WE LISTEN.**

We recognize that long lasting relationships do not exist based on the strength of the product alone. Thor engineers listen to experienced people who know what they want. We provide fast, accurate and relevant pre-purchase advice, as well as on-site start-up assistance and training. We also offer a complete comprehensive warranty policy on all of our products.



**AGGREGATE** COMPLEX PROBLEMS. SIMPLE SOLUTIONS.

# ELIMINATE SEGREGATION, COMPACTION AND CONTAMINATION!



**THE AGGREGATE INDUSTRY HAS BEEN THE CORE OF OUR BUSINESS.** Recognizing the needs of this industry led to the invention of the telescopic conveyor. Thor Global is dedicated to providing quality products that exceed expectations for the aggregate industry with telescopic technology and several other rugged products.

## **KEY BENEFITS: TELESCOPIC TECHNOLOGY**

Telescopic technology provides a stockpile that is non-segregated, non-compacted and non-contaminated. It enables you to stockpile larger volumes than conventional radial stackers

within the same footprint and will greatly reduce the use of fuel and costly equipment such as loaders and dozers, originally used to restore “out-of-spec” material.

### **VOLUME**

Stockpile 30% more material in the same area.

### **SEGREGATION**

In conventional stockpiling, material segregation occurs, as fines remain centered and coarser material falls along the outside to the bottom of the pile. Telescopic technology stockpiles material in flat concentric rows to reduce the challenge of segregation. Zero segregation programs are available when segregation is of the utmost importance.

ELECTRICAL CABLE  
HARNESS PULLEY: UHMW



## COMPACTION

In conventional stockpiling, material that falls in one position from variable heights will result in a degree of compaction.

Conventional forms of distribution also use front-end loaders or dump trucks to re-blend out-of-spec material, which compacts the material. Telescopic technology eliminates the challenge of compaction by maintaining a low constant pile height from the head pulley of the discharge conveyor to the pile. The conveyor also distributes product evenly in a controlled area without disrupting natural settling of the material. Conventional methods result in material bounce and roll-off.

## CONTAMINATION & MATERIAL DEGRADATION

In addition to compaction, the use of heavy machinery poses a risk of contaminating material with dirt, oil, steel or other undesirable objects. Such machinery is also

related to negative environmental impacts linked to emissions and fuel consumption. In an age where product quality is the driving force behind the success of an underlying business, contamination cannot be tolerated. Competitors generating higher quality will inevitably increase their market share as consumers look to their product for greater value.

## KEY PRODUCTS

**THORLINKS™** pg. 14  
portable transfer conveyor

**THORLOPRO™** pg. 16  
low-profile telescopic portable radial conveyor

**THORSTACKER™** pg. 18  
telescopic portable radial conveyor

**THORSTACKABLE™** pg. 20  
stackable portable transfer conveyors

**THORTOPFOLD™** pg. 22  
top fold portable radial conveyor

**THORTOWERSTACKER™** pg. 24  
telescopic cable mast conveyor

**THORHAMMERAXLE™** pg. 26  
hydraulic cylinder hammer-down axle

**THORTRUCKUNLOADER** pg. 28  
low-profile portable truck unloader

**THORTRAX™** pg. 30  
self-contained track unit

## KEY FEATURES

- Electrical cable harness pulley: UHMW
- Fully braced undercarriage: patented
- Idlers: CEMA C
- LES: patented

# WHEN YOU MOVE THIS MUCH YOU'RE BOUND TO BE LEAN.



**THOR GLOBAL ADDRESSES CHALLENGES ASSOCIATED WITH INTERNAL FIRES, COMPACTION, AND CONTAMINATION USING TELESCOPIC TECHNOLOGY.** These challenges

have a serious impact on revenue growth and sustainability, and are linked to negative implications with respect to environmental health. Agricultural producers and recycling plants benefit from the versatility of Thor Global's products.

## **KEY BENEFITS: TELESCOPIC TECHNOLOGY**


Telescopic technology provides a stockpile that is of larger volume, non-compacted and

non-contaminated. In addition to reducing the use of fuel and costly equipment, telescopic technology also reduces the risk of fires.

### **REDUCING THE RISK OF FIRES**

In conventional stockpiling, producers often use costly equipment to flip and rotate material to prevent the risk of internal fires. When stockpiling with telescopic technology, material is being poured under constant motion, which reduces friction and keeps the material loose, aerated and cool, ensuring the core temperature does not rise to the point of combustion.





BELT SCRAPER: TWIN-EDGE WITH  
PATENTED TENSIONING SYSTEM

## VOLUME

Stockpile 30% more material in the same area.

## COMPACTION

In conventional stockpiling, material that falls in one position from variable heights will result in a degree of compaction. Telescopic technology eliminates the challenge of compaction by maintaining a low constant pile height from the head pulley of the discharge conveyor to the pile. The conveyor also distributes product evenly in a controlled area without disrupting natural settling of the material.

## CONTAMINATION & MATERIAL DEGREDDATION

In addition to compaction, the use of heavy machinery poses a risk of contaminating material with dirt, oil, steel or other undesirable objects. Such machinery is also related to negative environmental impacts linked to emissions and fuel consumption. In an age where product quality is the driving

force behind the success of an underlying business, contamination cannot be tolerated. Competitors generating higher quality will inevitably increase their market share as consumers look to their product for greater value.

## KEY PRODUCTS

<b>THORLINKS™</b> portable transfer conveyor	pg. 14
<b>THORLOPRO™</b> low-profile telescopic portable radial conveyor	pg. 16
<b>THORSTACKER™</b> telescopic portable radial conveyor	pg. 18
<b>THORSTACKABLE™</b> stackable portable transfer conveyors	pg. 20
<b>THORTOPFOLD™</b> top fold portable radial conveyor	pg. 22
<b>THORTOWERSTACKER™</b> telescopic cable mast conveyor	pg. 24
<b>THORHAMMERAXLE™</b> hydraulic cylinder hammer-down axle	pg. 26
<b>THORTRUCKUNLOADER</b> low-profile portable truck unloader	pg. 28
<b>THORTRAX™</b> self-contained track unit	pg. 30

## KEY FEATURES

- Belt scale: optical
- Belt scraper: twin-edge with patented tensioning system
- Belt: cleaned
- Hydraulic cylinders: single stage
- Spray bar: outer configuration



# DEMAND MORE FROM YOUR EQUIPMENT.



**THOR GLOBAL PRESENTS MANY OPPORTUNITIES FOR THE MINING INDUSTRY WITH CUSTOM SOLUTIONS AND VERSATILE CONFIGURATIONS.** All products use high tensile strength steel and are equipped with mine-duty components. Thor Global also takes seismic standards into consideration when designing for regions that are prone to earthquakes. Thor Global has experience working with large engineering firms.

## **KEY BENEFITS: TELESCOPIC TECHNOLOGY**

Telescopic technology has proven beneficial in heap leaching applications as well as storage facilities for the mining industry. The technology has also been designed in a way that makes these machines meet your availability standards.

### **HEAP LEACHING**

The process of heap leaching has the challenging task of covering a very large leach pad footprint with a very flat and even layer of material. Traditional methods often require



HIGH FLOATATION TIRES



MOBILE TRACK UNIT

trucks and loaders in addition to frequently moving conveying equipment. In heap leaching applications, telescopic technology eliminates the need for trucks and loaders and reduces the need to move equipment frequently. Building heap leach pads using this technology is simple and cost effective.

## STORAGE

When storing bulk material, telescopic technology can maximize any given footprint by reaching all corners of the facility and leveling out your pile in concentric rows called windrows.

## AVAILABILITY

Our products meet 90-95% availability. Our engineers take great care in ensuring 100% bulletproof and low maintenance requirements by designing all things simple.

## KEY PRODUCTS

**THORLINKS™** pg. 14  
portable transfer conveyor

**THORSTACKER™** pg. 18  
telescopic portable radial conveyor

**THORSTACKABLE™** pg. 20  
stackable portable transfer conveyors

**THORHAMMERAXLE™** pg. 26  
hydraulic cylinder hammer-down axle

**THORTRUCKUNLOADER** pg. 28  
low-profile portable truck unloader

**THORTRAX™** pg. 30  
self-contained track unit

## KEY FEATURES

- Galvanizing: hot-dip
- High floatation tires
- Mobile track unit
- Safety guarding
- Steel: 60,000 psi



# WHEN YOU'VE REALLY GOT TO MOVE IT.

**SHIP, BARGE AND RAIL SYSTEMS ARE SOME OF THE MOST ECONOMICAL MEANS OF TRANSPORTING BULK MATERIALS AROUND THE WORLD.** Thor Global

continues to develop new and innovative solutions that are focused to accommodate the time sensitive needs of port and terminal operations. All machines are designed with the perfect balance of weight and structure to provide the strongest machine possible.

## **KEY BENEFITS: TELESCOPIC TECHNOLOGY**

Telescopic technology provides a cost effective solution for port and terminal facilities due to versatility and high tonnage. The ability to control bulk material using telescopic technology is especially an asset for ship loading applications.

### **CONTROL & PRECISION**

Ship loaders are faced with several challenges pertaining to the control of material. Not being able to load bulk material evenly on the vessel



TELESCOPING SPOUT



MOBILE TRUCK ATTACHMENT

is a huge concern. Telescopic technology provides operators with complete trimming and precise control of where material falls within each hold, maximizing space and volume on the vessel. Load the vessel evenly port to starboard, bow to stern.

### PREVENT DEMURRAGE FEES

With conventional ship loading equipment, port facilities are often challenged with the need to move a vessel multiple times during the loading process. Telescopic extension enables operators to fill multiple holds from one single feed point without moving the vessel, minimizing potential demurrage charges. Portable units can also be moved onsite without the need to move the vessel making the loading process very fast and efficient.

### DIVERSIFY YOUR PORT

Some port facilities need to diversify by providing multiple services and functions, which is why the versatility of a portable telescopic unit is such an asset to this industry. In just a few minutes the conveyor can be packed up and moved out of the way of the vessel when not in use.

In more permanent scenarios, ThorTowerStacker™ units can provide greater flexibility for function. No head undercarriage provides maximum clearance under the conveyor should space be required for driving trucks along side the vessel during loading.

## KEY PRODUCTS

<b>THORLINKS™</b> portable transfer conveyor	pg. 14
<b>THORLOPRO™</b> low-profile telescopic portable radial conveyor	pg. 16
<b>THORSTACKER™</b> telescopic portable radial conveyor	pg. 18
<b>THORSTACKABLE™</b> stackable portable transfer conveyors	pg. 20
<b>THORTOPFOLD™</b> top fold portable radial conveyor	pg. 22
<b>THORTOWERSTACKER™</b> telescopic cable mast conveyor	pg. 24
<b>THORHAMMERAXLE™</b> hydraulic cylinder hammer-down axle	pg. 26
<b>THORTRUCKUNLOADER</b> low-profile portable truck unloader	pg. 28
<b>THORTRAX™</b> self-contained track unit	pg. 30

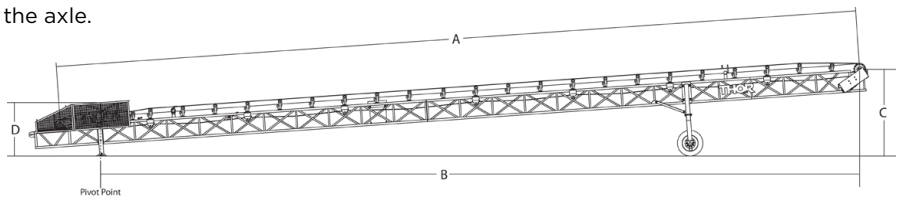
THESE DURABLE TRANSFER CONVEYORS ARE THE MOST PRACTICAL SOLUTION FOR ON-SITE MOBILITY.



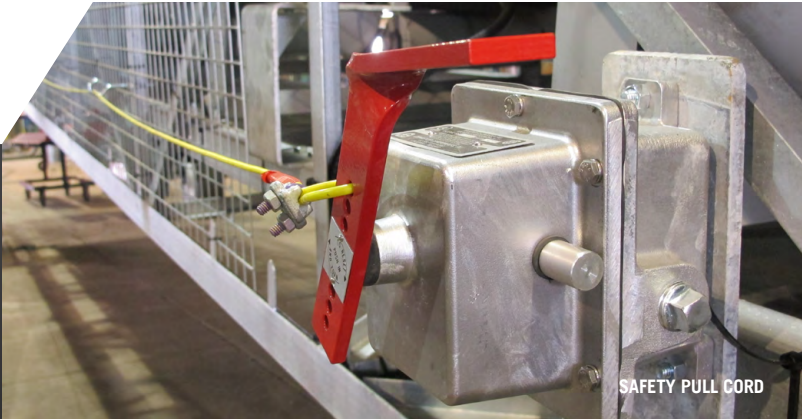
**THOR OFFERS A WIDE RANGE OF PORTABLE TRANSFER CONVEYORS TO COST EFFECTIVELY SUIT ANY APPLICATION.**

All transfer conveyors have a height adjustable range of 8ft at the axle.

**CONVEYOR DIMENSIONS:**







## KEY BENEFITS


- High-end components such as CEMA C idlers and CLASS 2 reducers make these conveyors very durable.
- Basic design makes these the most cost effective alternative to highway portable units.
- Simplified design provides effortless maintenance.

MODEL	BELT WIDTH	LENGTH	CAPACITY
TC50x36-0500/0800/1000	36in	50ft	500/800/1000STPH
TC70x36-0500/0800/1000	36in	70ft	500/800/1000STPH
TC80x36-0500/0800/1000	36in	80ft	500/800/1000STPH
TC100x36-0500/0800/1000	36in	100ft	500/800/1000STPH
TC120x36-0500/0800/1000	36in	120ft	500/800/1000STPH
TC150x36-0500/0800/1000	36in	150ft	500/800/1000STPH
TC80x42-1200/1500	42in	80ft	1200/1500STPH
TC100x42-1200/1500	42in	100ft	1200/1500STPH
TC120x42-1200/1500	42in	120ft	1200/1500STPH
TC50x48-2000	48in	50ft	2000STPH
TC80x48-2000	48in	80ft	2000STPH
TC120x48-2000	48in	120ft	2000STPH

MODEL	A	B	C	D
TC50x36 Series	50ft	45ft	4ft to 12ft	7ft
TC70x36 Series	70ft	65ft	5ft to 13ft	7ft
TC80x36 Series	80ft	75ft	6ft to 14ft	7ft
TC100x36 Series	100ft	95ft	7ft to 15ft	7ft
TC120x36 Series	120ft	115ft	8ft to 16ft	7ft
TC150x36 Series	150ft	145ft	11ft to 19ft	7ft
TC80x42 Series	80ft	75ft	8ft to 16ft	7ft
TC100x42 Series	100ft	95ft	9ft to 17ft	7ft
TC120x42 Series	120ft	115ft	10ft to 18ft	7ft
TC50x48 Series	50ft	42ft	8ft to 16ft	13ft
TC80x48 Series	80ft	72ft	10ft to 18ft	13ft
TC120x48 Series	120ft	112ft	12ft to 20ft	13ft

# THOR LOPRO™

LOW PROFILE TELESCOPIC  
PORTABLE RADIAL CONVEYOR



THE LOWEST FEED HEIGHT IN THE  
INDUSTRY WHILE MAINTAINING  
A LARGE TRUSS DEPTH FOR  
STRENGTH AND STABILITY.

**THOR GLOBAL'S PATENTED DESIGN HAS THE LOWEST FEED HEIGHT IN THE INDUSTRY WHILE MAINTAINING A LARGE TRUSS DEPTH FOR STRENGTH AND STABILITY.** These conveyors are highway portable. All the same benefits of ThorStacker™ conveyors are available in this low-profile package.



SIDE GUIDE ROLLERS: UHMW



PUSH DOWN AXLE: PATENTED

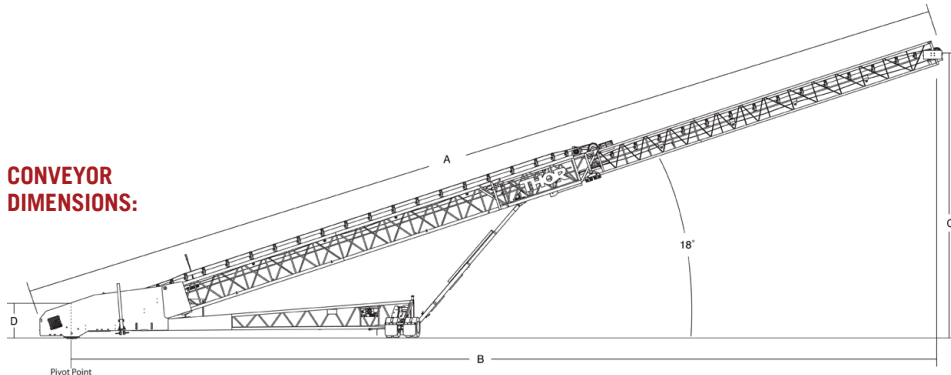
MODEL	BELT WIDTH	LENGTH	CAPACITY
LPT120x36-0500	36in	120ft	500STPH
LPT120x36-0800	36in	120ft	800STPH
LPT140x36-0500	36in	140ft	500STPH
LPT140x36-0800	36in	140ft	800STPH
LPT140x36-1000	36in	140ft	1000STPH
LPT150x36-0500	36in	150ft	500STPH
LPT150x36-0800	36in	150ft	800STPH
LPT150x36-1000	36in	150ft	1000STPH
LPT140x42-1200	42in	140ft	1200STPH
LPT140x42-1500	42in	140ft	1500STPH
LPT150x42-1200	42in	150ft	1200STPH
LPT150x42-1500	42in	150ft	1500STPH

MODEL	A	B	C	D
LPT120x36 Series	120ft	113ft - 9in	38ft - 0in	5ft - 7in
LPT140x36 Series	140ft	130ft - 10in	42ft - 6in	5ft - 7in
LPT150x36 Series	150ft	133ft - 6in	45ft - 8in	5ft - 7in
LPT140x42 Series	140ft	132ft - 6in	43ft - 0in	5ft - 5in
LPT150x42 Series	150ft	139ft - 2in	45ft - 6in	5ft - 5in

## KEY BENEFITS

- Eliminate the need for additional conveying equipment.
- Patented hinge point enables the feed angle to remain constant thus eliminating spillage.
- Lowest feed height in the industry provides maximum versatility.

### CONVEYOR DIMENSIONS:





# THOR STACKER™

TELESCOPIC PORTABLE  
RADIAL CONVEYOR

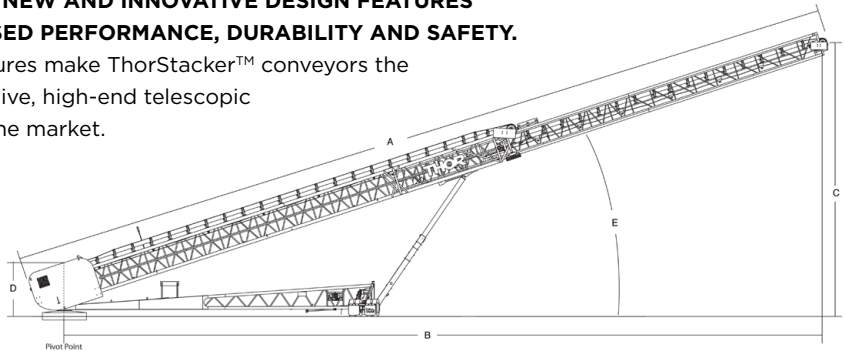
THE MOST ALL-INCLUSIVE,  
HIGH-END TELESCOPIC  
CONVEYOR ON THE MARKET.



**AS THE ORIGINAL INVENTOR OF THE TELESCOPIC STACKER, THOR GLOBAL HAS EXCEEDED EVERY REQUIREMENT BY DEVELOPING NEW AND INNOVATIVE DESIGN FEATURES FOR INCREASED PERFORMANCE, DURABILITY AND SAFETY.**

Standard features make ThorStacker™ conveyors the most all-inclusive, high-end telescopic conveyor on the market.

**CONVEYOR  
DIMENSIONS:**





## KEY BENEFITS

- Patented LES (Load Equalizing System) provides a structure with greater support and longevity under the stresses of heavier loads.
- Fully automated functions provide increased flexibility, accuracy, and efficiency.
- Patented Fully Braced Undercarriage allows the upper and lower portion of the undercarriage to be fully braced at all times, even when completely raised. Available on select models.

MODEL	BELT WIDTH	LENGTH	CAPACITY
T120x36-0500/0800	36in	120ft	500/800STPH
T140x36-0500/0800/1000	36in	140ft	500/800/1000STPH
T150x36-0500/0800/1000	36in	150ft	500/800/1000STPH
T170x36-0500/0800/1000	36in	170ft	500/800/1000STPH
T190x36-0500/0800	36in	190ft	500/800STPH
T135x42-1200/1500	42in	135ft	1200/1500STPH
T140x42-1200/1500	42in	140ft	1200/1500STPH
T150x42-1200/1500	42in	150ft	1200/1500STPH
T170x42-1200/1500	42in	170ft	1200/1500STPH
T190x42-1200/1500	42in	190ft	1200/1500STPH
T135x48-2000	48in	135ft	2000STPH
T140x48-2000/2200	48in	140ft	2000/2200STPH
T150x48-2000	48in	150ft	2000STPH
T170x48-1500/2000	48in	170ft	1500/2000STPH
T170x54-2000	54in	170ft	2000STPH

MODEL	A	B	C	D	E
T120x36 Series	120ft	111ft - 5in	38ft - 0in	8ft - 9in	18°
T140x36 Series	140ft	128ft - 1in	45ft - 6in	9ft - 9in	18°
T150x36 Series	150ft	135ft - 7in	54ft - 1in	9ft - 11in	20°
T170x36 Series	170ft	156ft - 3in	54ft - 6in	9ft - 9in	18°
T190x36 Series	190ft	175ft - 2in	60ft - 0in	9ft - 10in	18°
T135x42 Series	135ft	123ft - 2in	44ft - 4in	9ft - 9in	18°
T140x42 Series	140ft	128ft - 0in	48ft - 9in	9ft - 9in	18°
T150x42 Series	150ft	137ft - 4in	49ft - 8in	9ft - 10in	18°
T170x42 Series	170ft	154ft - 6in	54ft - 6in	10ft - 7in	18°
T190x42 Series	190ft	175ft - 2in	60ft - 0in	9ft - 10in	18°
T135x48 Series	135ft	123ft - 0in	45ft - 0in	11ft - 7in	18°
T140x48 Series	140ft	127 - 9in	47ft - 0in	11ft - 7in	18°
T150x48 Series	150ft	137ft - 9in	49ft - 0in	9ft - 11in	18°
T170x48 Series	170ft	154ft - 3in	55ft - 5in	11ft - 8in	18°
T170x54 Series	170ft	154ft - 5in	55ft - 1in	11ft - 8in	18°

# THOR STACKABLE™

STACKABLE PORTABLE  
TRANSFER CONVEYORS

REDUCE FREIGHT BY  
TRANSPORTING THREE  
CONVEYORS IN ONE HAUL.



**DRAMATICALLY REDUCE YOUR FREIGHT EXPENSES  
AND INCREASE YOUR OPERATING FLEXIBILITY WITH  
THORSTACKABLE™ PORTABLE TRANSFER CONVEYORS.**

Our highway portable package consists of three stackable conveyors that are hot-dip galvanized for long-term rust and corrosion prevention.





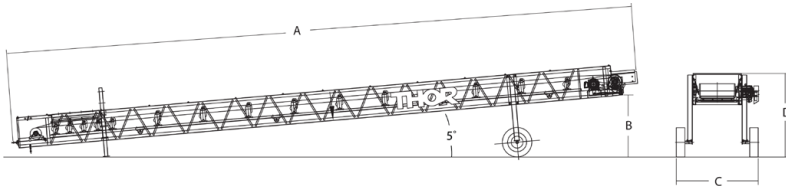
GEAR REDUCERS: CLASS 2

## KEY BENEFITS

- Reduce freight by transporting three conveyors in one haul.
- High-end components such as CEMA C idlers and CLASS 2 reducers make these conveyors very durable.
- Manually adjustable legs for versatility.

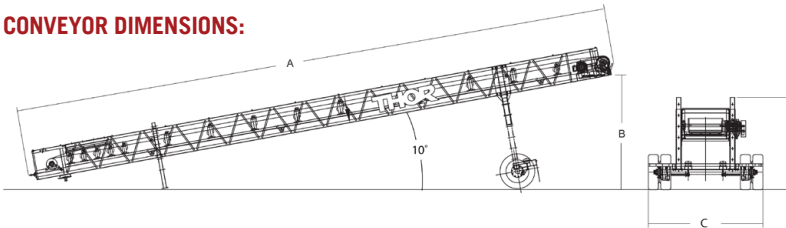
MODEL	BELT WIDTH	LENGTH	CAPACITY
SC55x36-0800	36in	55ft	800STPH

### CONVEYOR DIMENSIONS:



MODEL	A	B	C	D
SC55x36-0800 Top/Middle	55ft	6ft - 0in	7ft - 2in	7ft - 4in

### CONVEYOR DIMENSIONS:



MODEL	A	B	C	D
SC55x36-0800 Bottom	55ft	10ft - 4in	10ft - 5in	8ft - 4in

# THOR

## TOPFOLD™

TOP FOLD PORTABLE  
RADIAL CONVEYOR

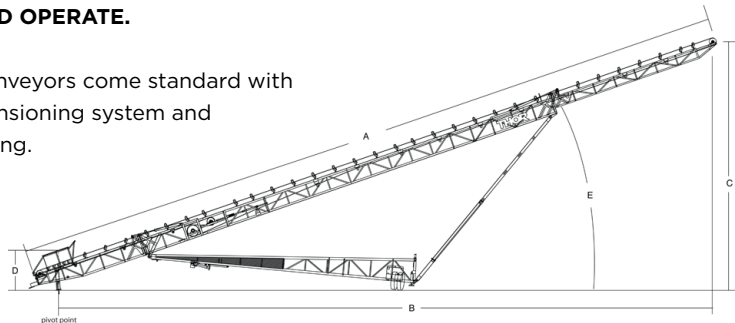
THIS EQUIPMENT IS  
EASY TO SET-UP  
AND OPERATE.



**THE SWING FREE HOPPER DESIGN SIMPLIFIES  
THE FOLDING PROCESS MAKING THIS EQUIPMENT  
EASY TO SET-UP AND OPERATE.**

All ThorTopFold™ conveyors come standard with  
an automated belt tensioning system and  
premium quality belting.

### CONVEYOR DIMENSIONS:





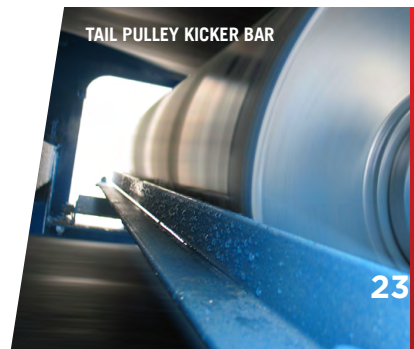
IDLERS: CEMA C

## KEY BENEFITS

- Automatic hydraulic belt tensioning system enables for immediate set-up on arrival.
- Highway portability provides a versatile product that can be easily integrated into any application.
- Hinged receiving chute enables unit to be folded with chute intact.

MODEL	BELT WIDTH	LENGTH	CAPACITY
TF80x36-0600	36in	80ft	600STPH
TF100x36-0600	36in	100ft	600STPH
TF130x36-0600	36in	130ft	600STPH

MODEL	A	B	C	D	E
TF80 Series	80ft	72ft - 4in	28ft - 11in	7ft - 8in	18°
TF100 Series	100ft	90ft - 11in	35ft - 7in	7ft - 8in	18°
TF130 Series	130ft	120ft - 5in	45ft - 8in	7ft - 1in	19°



TAIL PULLEY KICKER BAR



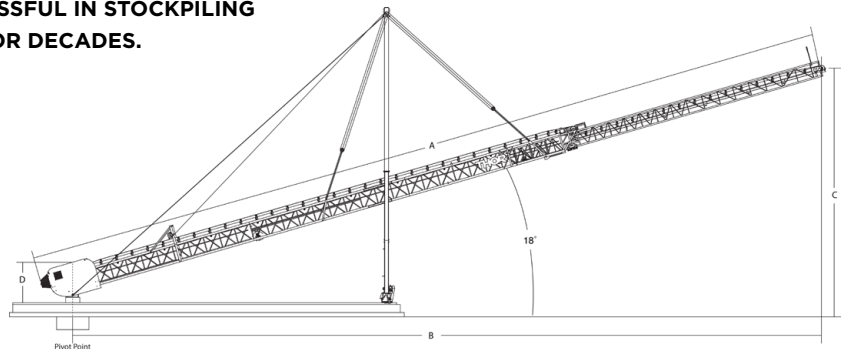
# THOR TOWERSTACKER™

TELESCOPIC CABLE  
MAST CONVEYOR

THIS CABLE MAST DESIGN  
ALLOWS YOU TO REACH SIZES  
AND TONNAGES BEYOND ANY  
CONVENTIONAL TELESCOPIC.

THOR GLOBAL HAS APPLIED TELESCOPIC TECHNOLOGY  
TO A TRADITIONAL CABLE MAST SYSTEM THAT  
HAS BEEN SUCCESSFUL IN STOCKPILING  
APPLICATIONS FOR DECADES.

CONVEYOR  
DIMENSIONS:





The ThorTowerStacker™ is a scalable product that has been engineered to perfection using a rail system configuration that is capable of handling pressures of a larger machine.

MODEL	BELT WIDTH	LENGTH	CAPACITY
TS200x36-0800	36in	200ft	800STPH
TS230x36-0800	36in	230ft	800STPH
TS250x36-0800	36in	250ft	800STPH
TS200x42-1200/1500	42in	200ft	1200/1500STPH
TS230x42-1200/1500	42in	230ft	1200/1500STPH
TS250x42-1200/1500	42in	250ft	1200/1500STPH
TS150x48-2000	48in	150ft	2000STPH
TS200x48-2000	48in	200ft	2000STPH
TS230x48-2000	48in	230ft	2000STPH
TS250x48-2000	48in	250ft	2000STPH
TS150x54-3000	54in	150ft	3000STPH
TS200x54-3000	54in	200ft	3000STPH

## KEY BENEFITS

- Enlarged structural design enables you to stockpile material in excess of 350,000 tons and 4000STPH.
- Conveyor can be lowered all the way to the ground to provide easy access for maintenance.
- No head or tail undercarriage provides greater clearance under the conveyor.

MODEL	A	B	C	D
TS200x36/42/48 Series	200ft	185ft - 3in	67ft - 0in	9ft
TS230x36/42/48 Series	230ft	213ft - 6in	76ft - 4in	9ft
TS250x36/42/48 Series	250ft	232ft - 8in	82ft - 6in	9ft
TS150x48 Series	150ft	138ft - 11in	55ft - 6in	9ft
TS150x54 Series	150ft	138ft - 11in	56ft - 6in	10ft
TS200x54 Series	200ft	185ft - 3in	67ft - 0in	10ft

# THOR HAMMER AXLE™

HYDRAULIC FOLD-UP AXLE



AVAILABLE ON ALL  
36IN TELESCOPIC CONVEYORS  
UP TO 150FT

## **SMASH YOUR SETUP AND TEAR-DOWN TIME IN HALF WITH THE NEW THOR HAMMERAXLE™**

**THOR Hammer Axle™** is simple and unique. The main cylinders meet at a common pivot point at the centre of the tail undercarriage, reducing stress on the overall structure of the machine.

Both outriggers sit on a pivotable walking beam to provide balanced pressure to ground on unlevel terrains. Adjust the main cylinders to compensate for minor slope variations and maintain a smooth radial motion with the benefit of a variable-frequency drive (VFD).



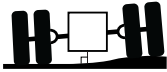


## KEY BENEFITS

- Mobile design enables you to travel to stacking or loading mode in minutes.
- Conveyor can be used and moved in low-ground-pressure and uneven soil.
- Save time & fuel, reduce manual labor, and cut down setup & teardown time.

### STANDARD FEATURES

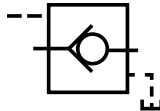
Pivotable Walking Beam  
for Balanced Pressure



Electric Drive



Check Valve to Ensure  
No Hydraulic Creep

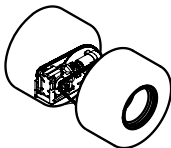


Single-stage Cylinders



### OPTIONAL FEATURES

4x4 Drive for  
More Traction



Off-the-road (OTR)  
Tires



High Flotation Tires



# THOR TRUCK UNLOADER

LOW-PROFILE PORTABLE  
TRUCK UNLOADER



**AVAILABLE IN EITHER 48" OR  
72" WIDE CONVEYOR BELT  
CONFIGURATIONS**

**LIGHTEN THE LOAD ON YOUR TEAM WITH  
THE LOW-PROFILE THOR TRUCK UNLOADER**

**THOR Truck Unloader** comes with either a 48" or 72" wide conveyor belt, allowing a capacity of up to 1,500 STPH of 100 PCF material. Adjust the discharge height and speed with the onboard system and gating mechanism for full control over your unloading process.



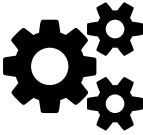
Streamline your workflow by discharging material, at an adjustable height, directly into a conveyor, or either a belly-dump or end-dump truck.

## KEY BENEFITS

- Works with either Belly or End Dumps truck designs.
- Reduce spillage, and save on fuel and maintenance costs.
- High capacity design allows transfers of up to 1,500 STPH of 100 PCF material.
- Optimize your workflow by removing the need for an earthen ramp and multiple handling of material.

### STANDARD FEATURES

Class II Dual Drive

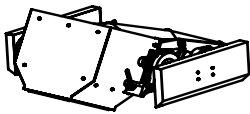


Fifth Wheel Hitch

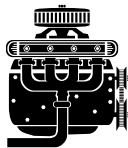


### OPTIONAL FEATURES

Discharge Hood



On-board Diesel Power



Remote Operation



Custom Hoppers





# THOR TRAX™

SELF-CONTAINED  
TRACK UNIT



**HIGHLY DURABLE AND  
EFFECTIVE ON ALL TERRAINS**

**DRIVE DOWN COSTS AND PUSH YOUR MATERIAL HANDLING  
CAPABILITY INTO OVERDRIVE WITH THE THOR TRAX™**

**THOR TRAX™** comes as a self-contained unit that works with any heavy equipment equipped with a fifth-wheel pin.

Enjoy higher mobility and maneuverability with either rubber or steel continuous tracks that performs well in all terrains to deliver results.



## KEY BENEFITS

- Usable with shiploading/ mining equipment, or any fifth-wheel pin machine.
- Mobile even on soft or uneven soil conditions.
- Doubles as a solid anchoring point when stationary.
- Removes the need for multiple handling of material.

## STANDARD FEATURES

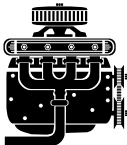
Remote Operation



Fifth Wheel Hook-up Plate



Onboard Diesel Power

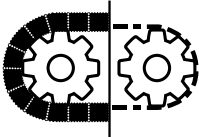


Dual Speed

**85 fpm**  
or  
**170 fpm**

## OPTIONAL FEATURES

Rubber or Steel Tracks





**OUR CREATIVE TEAM OF ENGINEERS AND PROJECT MANAGERS WILL COMMUNICATE, DEVELOP AND IMPLEMENT YOUR CUSTOM SOLUTIONS FAST.**

**THOR GLOBAL IS CAPABLE OF CUSTOMIZING EXISTING PRODUCTS AS WELL AS DESIGNING NEW SOLUTIONS.**

Our creative team of engineers and project managers will communicate, develop and implement your custom solutions fast.

## **COMMUNICATE**

Thor engineers listen to experienced people who know what they want. We provide fast, accurate and relevant pre-purchase advice, as well as on-site start-up assistance and training. Thor Global's dedicated project management team is capable of handling





complex data specification manuals in a timely manner. Thor Global also has experience working with large engineering firms.

## **DEVELOP**

We not only listen to requirements, but we add experience. Thor Global is capable of providing fast, innovative solutions for a wide range of unique projects. We are committed to developing practical solutions with a quality that exceeds expectations. We believe in working as a team. Together we can move mountains.

## **IMPLEMENT**

Thor Global offers complete commissioning services including onsite training and post sales support. We want to make sure that you receive results.



HELPING BULK  
MATERIAL HANDLERS  
MOVE MORE THAN  
JUST MATERIALS.



**THOR GLOBAL ENTERPRISES LTD.**

839 Westport Crescent

Mississauga, Ontario Canada L5T 1E7

**t:** 905.564.0440 **tf:** +1.888.564.0440

**[thorglobal.ca](http://thorglobal.ca)**

**MOVE  
MOUNTAINS.**